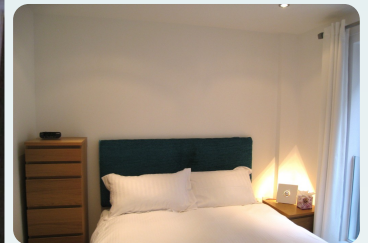


Steward Street



Overview

Four Steward Street is a brand new purpose built apartment block situated in a highly desirable and sought after area, central to City offices and several tube stations enabling easy access to the City and London. The immediate area offers an array of boutique shops, cafes and restaurants and the cultural sophistication of Old London meets new. Each one bedroom apartment provides light and spacious accommodation and features open plan kitchen/dining/living area, separate bedroom and bathroom.

Beds



1 bedroom apartment –
(sleeps 2)

Contact Details

Web www.clarendonuk.com

Tel +44 (0)1784 489 222

Email enquiries@clarendonuk.com

Facilities

- Video entry phone
- Dishwasher
- Washer/dryer
- Freeview TV
- TV
- DVD
- Hifi
- Direct phone line with low cost calls
- High speed internet access
- Fully equipped kitchen

Location Details

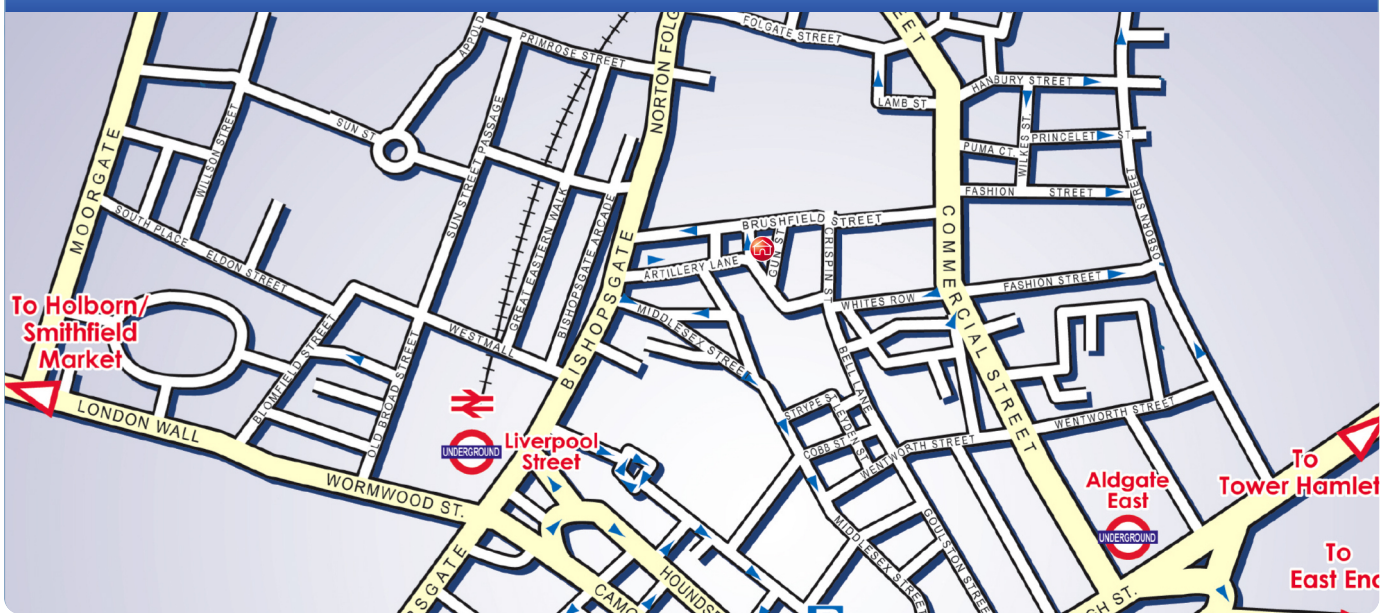
Steward Street is conveniently located close to City offices and the immediate area offers an array of boutique shops, restaurants and street style cafes.

- Supermarket - 3 minutes walk
- Restaurants - 3 minutes walk
- Bars - 3 minutes walk
- Easy access to London City Airport

Travel Details

Nearest Tube Station: Liverpool Street 3 minutes walk Nearest DLR Station - Bank - 10 minutes walk Nearest Railway Stations: Liverpool Street- 3 minute walk Nearest Airport: London City Airport (LCA) - 25 mins by taxi London Heathrow (LHR) - 1.5 hours by taxi

Location Map



Contact Details

Web www.clarendonuk.com

Tel +44 (0)1784 489 222

Email enquiries@clarendonuk.com